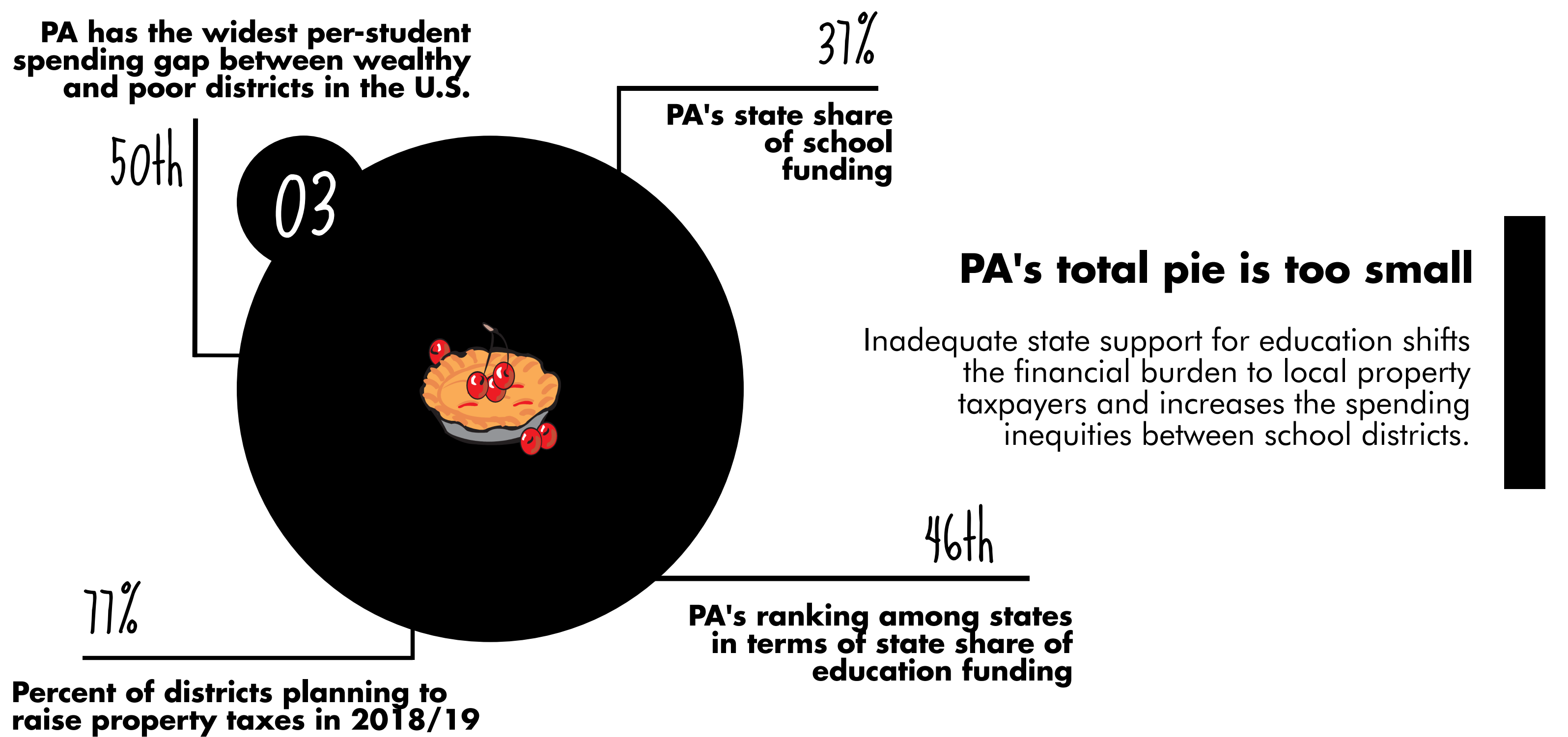
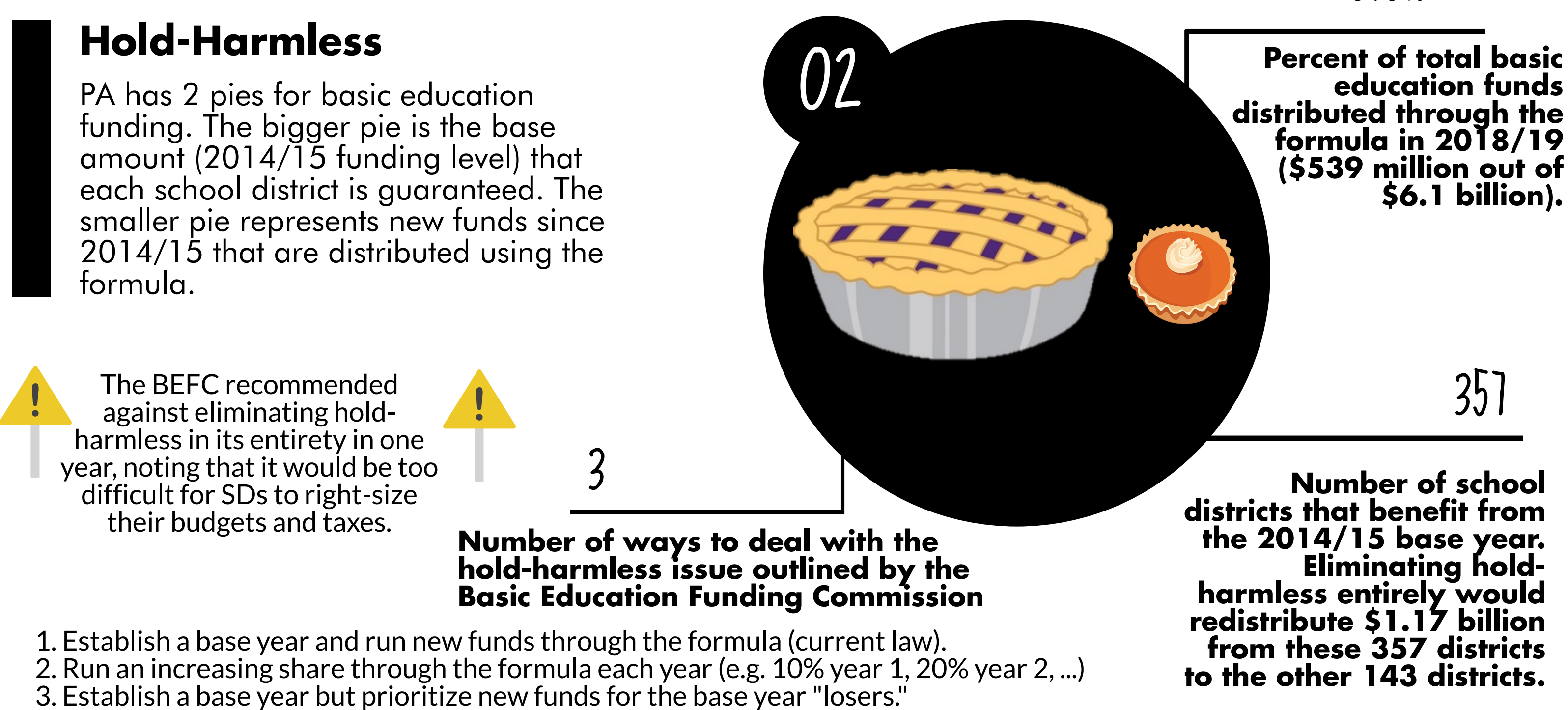
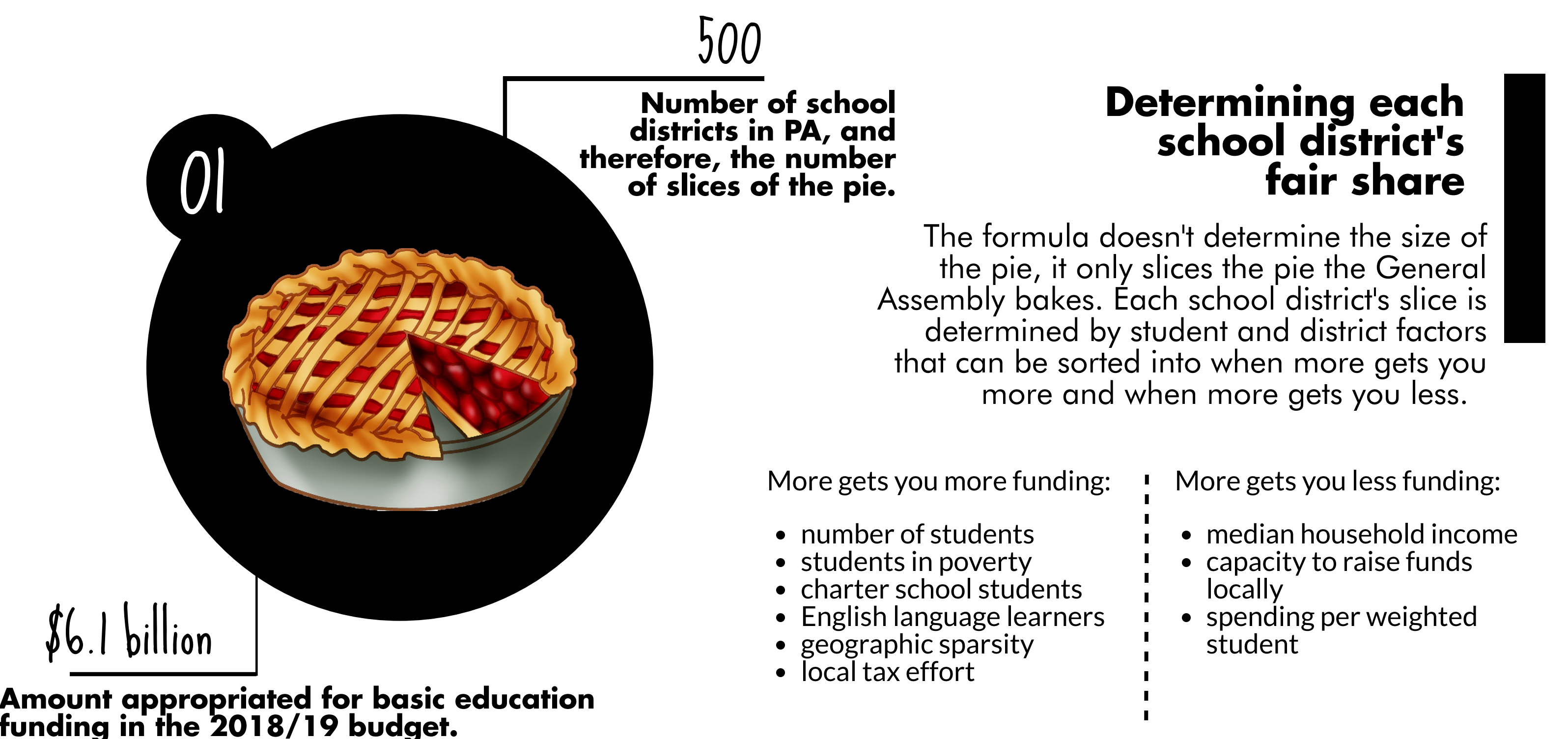


PA's Basic Education Formula

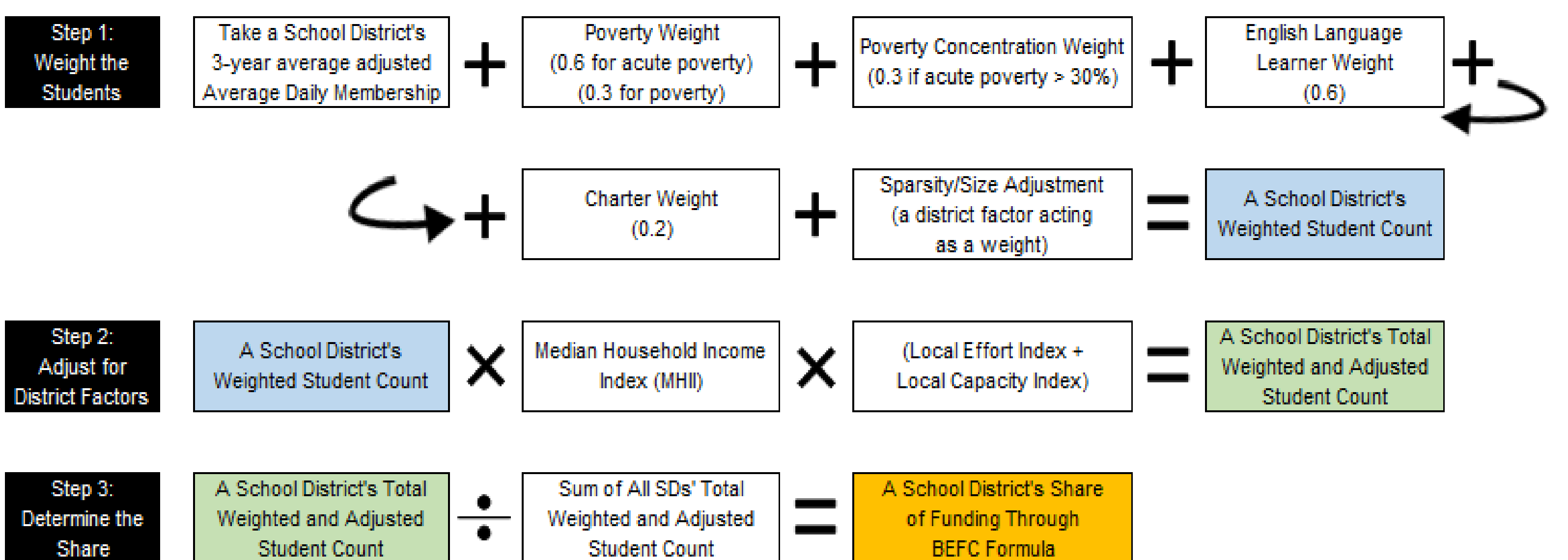
How It Works

The formula determines each school district's share of state basic education funding using a series of factors.



Visualize the Formula

Basic Education Funding Commission's (BEFC) Recommended Formula



Sources:

PA Department of Education's 2016/17 Annual Financial Reports

<http://www.washingtonpost.com/news/local/wp/2015/03/12/in-23-states-richer-school-districts-get-more-local-funding-than-poorer-districts/>

<https://www.census.gov/data/tables/2016/econ/school-finances/secondary-education-finance.html>

<http://file2.pasbo.org/Budget%20Report%202018%20FINAL.pdf>